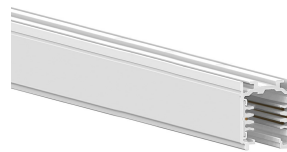


# OTR TRACKS RAILS STANDARD



**Part number** 310874  
**Finish:** WH-87 / White / Textured



## Description

The track system with 3 switches is a complete installation system designed for stores, supermarkets, public facilities, museums.

- All designs can be easily implemented, and assembly is facilitated by the use of tracks and standard accessories

- Designed for exposed, recessed or suspension installation, and the luminaires can be easily moved, changed or modified

- Tracks and accessories are available in the shades white (BW), grey (AL) and black (NZ)

- The indication "earthing conductor on the right, left, inside or outside" for power supply units, corner and T- derivations are based on the earthing conductor's position on the track. The position of the earthing conductor on the track depends on the visual direction. The visual direction follows the operating direction of the system on the cross cup of the track that opens downwards

- Compatible with 3F "standard" adaptors that do not use DIM

- The OTR binary system is a mixed three-phase system with two additional conductors for the management of any signal (e.g. DIM 1-10 V, DALI, DMX, LON, EIB, etc).

## Photometric data

## Technical drawings



## MANDATORY ACCESSORIES

### 9001 - OTR END - FEED RIGHT



310758  
Feeder - L - right mechanical wrench /  
left grounding

White RAL9010

### 9002 - OTR END - FEED LEFT



310759  
Feeder - R - right mechanical wrench /  
right grounding

White RAL9010

### 9003 - OTR TK CONNECTOR



310713  
Through joint

White RAL9010

### 9003-M - OTR TK CONNECTOR ONLY MECHA



310667  
Insulating connection

White RAL9010

### 9010 - OTR MIDDLE-FEED



310827  
Direct joint

White RAL9010

### 9018 - OTR FLEXIBLE CORNER



310849  
Flexible joint

White RAL9010

### 9011 - OTR L - FEED INT



310832  
L-shaped joint - internal mechanical  
wrench / external grounding

White RAL9010

#### 9012 - OTR L - FEED EXT



310833  
L-shaped joint - external mechanical  
wrench / internal grounding

White RAL9010

#### 9013 - OTR T - FEED EXT LEFT



310858  
T-shaped joint - left mechanical  
wrench / right grounding

White RAL9010

#### 9014 - OTR T - FEED EXT RIGHT



310859  
T-shaped joint - right external  
mechanical wrench / left internal  
grounding

White RAL9010

#### 9015 - OTR T - FEED INT LEFT



310860  
T-shaped joint - left internal  
mechanical wrench / right external  
grounding

White RAL9010

#### 9016 - OTR T - FEED INT RIGHT



310861  
T-shaped joint - right internal  
mechanical wrench / left external  
grounding

White RAL9010

#### 9017 - OTR X - FEED



310876  
X-shaped joint  
White RAL9010

#### 9001/115



310581  
Gasket for feeder  
White RAL9010

#### 9004



310617  
Closing cap with locking screw  
White RAL9010

#### 9000/H



310630  
Suspension hook  
White RAL9010

#### S-9000/GP



310637  
Additional protective sheath (1 m)  
White RAL9010

#### S-9000/113



310653  
Short suspension clamp (40 mm)  
White RAL9010

#### S-9000/123



310728  
Long suspension clamp for use with  
through joint (100 mm)

White RAL9010

#### S-9000/313



310655  
Short suspension clamp (25 mm)

White RAL9010

#### S-9000/333



310730  
Long suspension clamp (180 mm)

White RAL9010

#### S-9000/131



310698  
Ceiling-mounting clamp

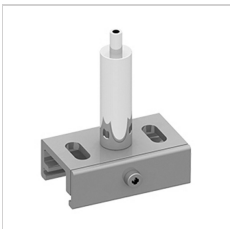
White RAL9010

#### S-9000/132



310642  
Ceiling-mounting clamp for  
suspensions

#### 9000/231



310740  
Clamp with automatic tensioner

#### 9000/312-LA



311048  
Short suspension clamp with hole for  
automatic tensioner (35 mm)

White RAL9010

#### 9000/312-SV



311051  
Short suspension clamp with hole for  
cable with ball terminal (35 mm)

White RAL9010

#### 9000/322-LA



311054  
Medium suspension clamp with hole  
for automatic tensioner (100 mm)

White RAL9010

#### 9000/322-SV



311057  
Medium suspension clamp with hole  
for cable with ball terminal (100 mm)

White RAL9010

#### 9000/332-LA



310738  
Long suspension clamp with hole for  
automatic tensioner for use with  
through joint (180 mm)

White RAL9010

#### 9000/332-SV



311077  
Long suspension clamp with hole for  
cable with ball terminal for use with  
through joint (180 mm)

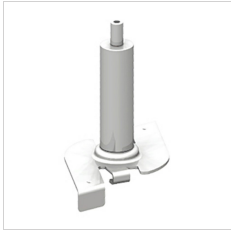
White RAL9010

#### S-9000/111



310625  
Steel clip for mounting on ceiling

#### S-9000/114-T



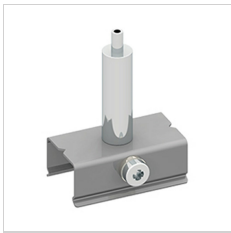
310744  
Clip with automatic tensioner for  
quick mounting  
  
White RAL9010

#### S-9000/115



310651  
Clip for quick mounting  
  
White RAL9010

#### S-9000/116



310699  
Clamp with automatic tensioner

#### S-9000/118



310696  
Clip for quick mounting with M6  
tensioner  
  
White RAL9010

#### S-9000/119-TB



310689  
Clip for quick mounting of track on T-  
bar  
  
White RAL9010

#### S-9000/5



310613  
Plastic cover for clips and clamps

White RAL9010

## 9000/211



310634  
Steel cable (Ø 1.5 mm - 1.5 m length)



310643  
Steel cable (Ø 1.5 mm - 2 m length)



310657  
Steel cable (Ø 1.5 mm - 3 m length)



310718  
Steel cable (Ø 1.5 mm - 5 m length)

## 9000/211-S



310647  
Steel cable (Ø 1.5 mm - 1.5 m length)  
with ball terminal



310658  
Steel cable (Ø 1.5 mm - 2 m length)  
with ball terminal



310668  
Steel cable (Ø 1.5 mm - 3 m length)  
with ball terminal



310726  
Steel cable (Ø 1.5 mm - 5 m length)  
with ball terminal



310741  
Steel cable (Ø 1.5 mm - 6 m length)  
with ball terminal

## 9000/218



310665  
M5 automatic tensioner with lateral  
hole, in chromed brass

## 9000/213





310671  
Automatic hook tensioner, in nickel-plated brass

#### 9000/214



310693  
Automatic locking tensioner, in nickel-plated brass

#### 9000/215



310619  
Screw tensioner, in nickel-plated brass

#### 9000-KIT2 - 1,5 m



310778  
Bracket for mounting on ceiling, screw tensioner, plastic ceiling rose, Ø 1.5 mm 1.5 m-long steel cable with ball end, clip for quick mounting

White RAL9010

#### 9000-KIT2 - 3 m



310787  
Ceiling-mounting bracket, screw tensioner, plastic ceiling rose, Ø 1.5 mm 3 m-long steel cable with ball end, clip for quick mounting

White RAL9010

#### 9000-KIT2 - 5 m



310813  
Bracket for mounting on ceiling, screw tensioner, plastic ceiling rose, Ø 1.5 mm 5 m-long steel cable with ball end, clip for quick mounting

White RAL9010

#### 9000-KIT6 - 1,5 m



310781  
Screw tensioner, plastic ceiling rose, Ø  
1.5 mm 1.5 m-long steel cable with  
ball end, bracket with milled hole and  
automatic tensioner

White RAL9010

#### 9000-KIT6 - 3 m



310794  
Screw tensioner, plastic ceiling rose, Ø  
1.5 mm 3 m-long steel cable with ball  
end, bracket with milled hole and  
automatic tensioner

White RAL9010

#### 9000-KIT6 - 5 m



310810  
Screw tensioner, plastic ceiling rose, Ø  
1.5 mm 5 m-long steel cable with ball  
end, bracket with milled hole and  
automatic tensioner

White RAL9010

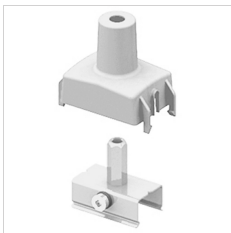
#### 9000-P3-KIT4 - 1 m



310770  
Bracket for mounting on ceiling, M6  
nut, plastic ceiling rose, M6 1 m-long  
threaded bar with cover sheath

White RAL9010

#### 9000-P2



310736  
Bracket with M6 tensioner and plastic  
cover

White RAL9010

#### 9000/3



310603  
Plastic ceiling rose for Ø 1.5 mm steel  
cable

White RAL9010

#### 9000/4



310606  
Plastic ceiling rose for threaded bar in  
M6 steel

White RAL9010

## 9000/216



310644  
Metal ball ceiling rose with hole

## 9009



310751  
6-Conductor DALI adapter (3-phase +  
control system) (maximum load 100 N  
= 10.2 kg)

White RAL9010

## 9009-4



310725  
4-Conductor adapter (3-phase)  
(maximum load 100 N = 10.2 kg)

White RAL9010

## S-9209



310764  
Asymmetric 6-conductor Dali adapter  
(3-phase + control system) (maximum  
load 100 N = 10.2 kg)

White RAL9010

## 9209-4



310737  
Asymmetric 4-conductor adapter (3-  
phase) (maximum load 100 N = 10.2  
kg)

White RAL9010

## 9409-4



311060  
Asymmetric 4-conductor adapter (3-phase) (maximum load 50 N = 5.1 kg)

White RAL9010

#### 9409-4-DRI



311063  
Compact 4-conductor adapter with integrated driver (3-phase) (100-850 mA - max. 40 VDC)

White RAL9010

#### 9909-4-DRI



310888  
Integrated 4-conductor adapter with integrated driver (3-phase) (100-850 mA - max. 40 VDC)

White RAL9010

#### 9000/BP-D



310845  
Adapter ceiling-mounting base (without using the track)

White RAL9010

#### 9000/BR



310830  
Adapter suspended ceiling-mounting base (without using the track)

White RAL9010

#### S-9000/M



310678  
Mechanical adapter

White RAL9010

#### S-9000/BC



310624  
External cable clamp with plastic grub  
screw

White RAL9010

#### S-9000/D



310609  
Nut for M10 connector



310610  
Nut for M13 connector

#### 9009/IP40



310592  
IP40 Housing for symmetrical adapter

White RAL9010

#### S-9000



310638  
Aluminium M10 connector for adapter



310639  
Aluminium M13 connector for adapter

#### S-9000/SC



310662  
Aluminium M10 connector without  
collar for adapter



310663  
Aluminium M13 connector without  
collar for adapter

#### S-9000/FI



310648  
Aluminium M10 connector with  
internal thread for adapter

#### 9009/T-INS



310862  
Adapter wiring insert

#### 9009/T-HAN



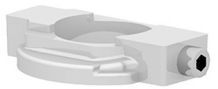
310846  
Handle for adapter wiring insert

#### 9009/10



310586  
Internal cable clamp for symmetrical  
adapter  
White RAL9010

#### 9009/51



310656  
Aluminium ring with block grub screw  
to prevent twisting of adapter  
connectors

#### 9209/IP40



310593  
IP40 Housing for asymmetrical  
adapter  
White RAL9010

#### 9209/20



310587  
Internal cable clamp for asymmetrical  
adapter  
White RAL9010

#### 9909-DRI/11



310600  
Plastic friction ring for retractable  
adapter

White RAL9010

#### 9909/M10



310731  
M10 Terminal for retractable adapter

#### 9209/BD-M



310720  
LED driver box. For use with  
asymmetrical adaptor 9209.... Max.  
size for driver housing: 116x52x30 mm

White RAL9010

#### 9209/BD-L



310724  
LED driver box. For use with  
asymmetrical adaptor 9209.... Max.  
size for driver housing: 116x52x30 mm

White RAL9010

#### 9209-BD/3



310608  
Plastic cover and screws for LED  
driver box connectors

White RAL9010

#### 9209-BD



310669  
Aluminium M10 connector for LED  
driver box



310670  
Aluminium M13 connector for LED  
driver box

#### 9209-BD-10/4



310595  
Adapter for M10 connector for LED  
driver box

White RAL9010

#### 9209-BD-13/4



310597  
Adapter for M13 connector for LED  
driver box

White RAL9010

#### DRV BX KIT-BD/M10



310708  
Kit for LED driver box - complete set  
for M10 mounting

White RAL9010

#### DRV BX KIT-BD/M13



310710  
Kit for LED driver box - complete set  
for M13 mounting

White RAL9010

#### 9909-DRI



310897  
Integrated 6-conductor DALI adapter  
with integrated driver (3-phase +  
control system) (350-500 mA - max. 50  
VDC)

White RAL9010